

# HYVA CYLINDER



715 64 303B

Front end cylinder with double eye

type

FEE 129-4-04620-229A-K1567-HC

tipping weight

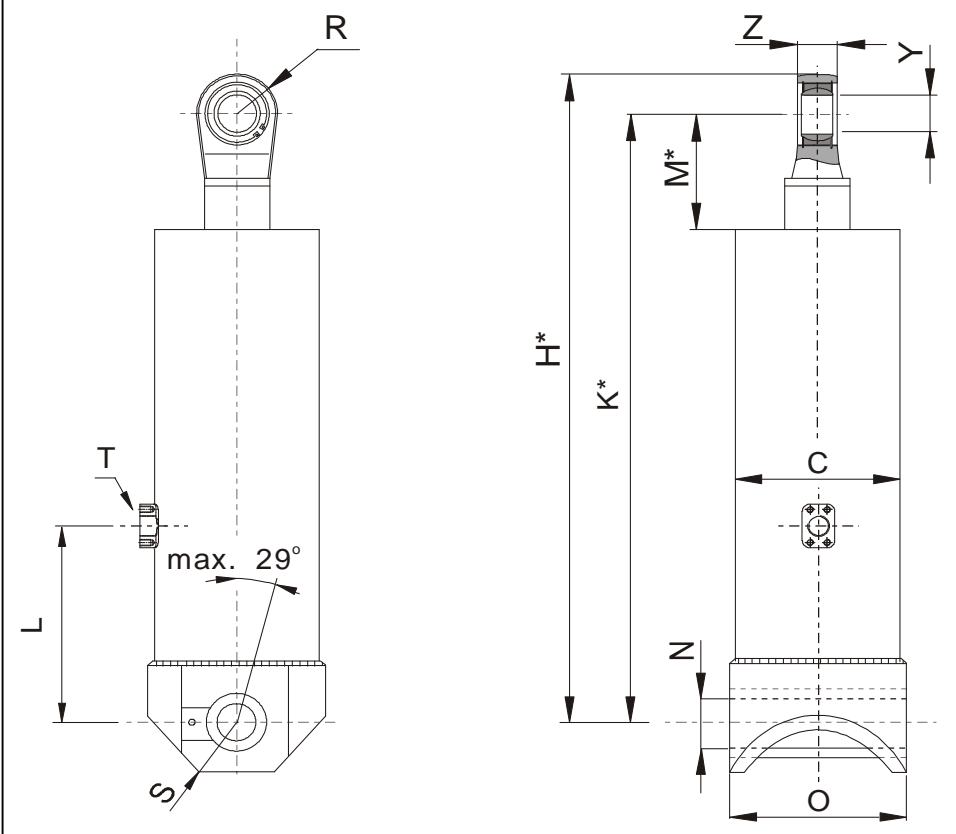
22-44 ton

page # 1 / 2

closed length (K)

1562-1597 mm

front & side view cylinder



	1	2	
A			mm
B			mm
C	149		mm
D			mm
E			mm
F			mm
G*			mm
H*	1620		mm
I			mm
J			mm
K*	1567		mm
L	330		mm
M*	128		mm
N	52.5		mm
O	194		mm
P			mm
Q			mm
R	53		mm
S	61		mm
T	1" NPT SAE		
U			mm
V			mm
W			mm
X			mm
Y	50		mm
Z	42		mm

\*incl.20[-5;+30] mm pull out on piston

## specifications

weight cylinder only	143 kg
total volume	43 L
working volume	39 L
maximum pressure	190 bar
maximum pump flow	86 L/min
maximum cylinder angle to front	30 °
maximum thrust first stage**	25 ton

## technical notes

This cylinder is a lifting device only and may not be used as structural member or be subject to side load. Working pressure depends on application; never exceed maximum pressure. Cylinder painted with Akzo Air drying Enamel (RAL9005). Max duration of extension 2 hours (excluded HC). See mounting instruction CYL-0019. See oil specification sheet OIL-0002. See bracket specification sheet 015BRA01.

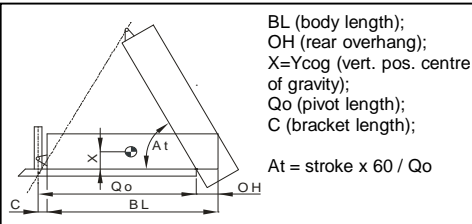
\*\*when cyl. mounted at a large angle, thrust first stage may become too high: see Hyva Tipper Program

extension	1	2	3	4	5	6	7	8	9	
effective diameter [mm]	129	110	91	72						total
stroke [mm]	1140	1160	1160	1160						4620

## tipping weight

tipping weight at maximum pressure of 190 bar and C is 158 mm

	BL	6100			5950			5800		
OH	200	500	800	200	500	800	200	500	800	
At	46	48	51	47	50	53	48	51	55	
Ycog										
600	22	24	28	22	25	29	23	26	30	
900	24	27	32	24	28	33	25	29	35	
1200	26	30	37	27	32	40	28	34	44	



Subject to change without notice.

DO-E 715 64 303B / 11-07-29 / RV AA

# HYVA CYLINDER

715 64 303B

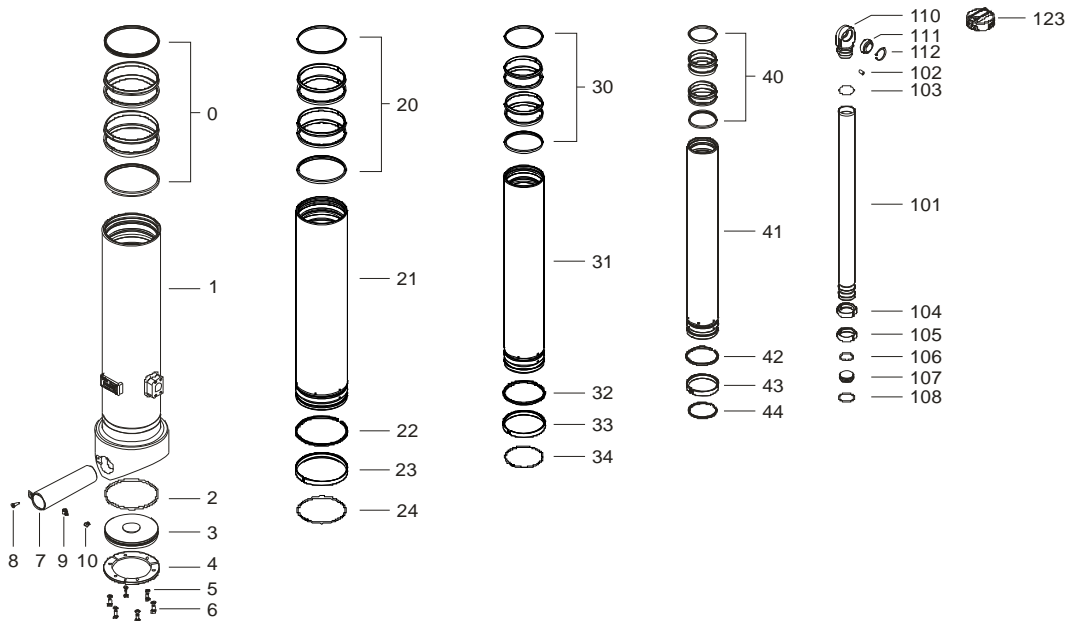


Front end cylinder with double eye

type

FEE 129-4-04620-229A-K1567-HC

page # 2 / 2



## Spare part list

Pos	Part no.	Description	Qty.
0	71802149 K	PACKSET FL 149/HP 150	01
1	72505389	BASE E 149-1399-4/4NPTS/AE-330	01
2	71870030 K	SEAL BOTTOM PLATE 149	01
3	71821149	BOTTOM PLATE 149	01
4	71820149	LOCKING PLATE 149	03
5	01732559 K	SPRING WASHER M8 SET	01
6	01732055 K	BOLT M8 X 1.25 X 20 SET	01
7	01794355	LONG BOSS EYE B.149 (73-52.5) L=193	01
8	01746121	BOLT LOCKING M8x25 DIN 7991	01
9	01317659	GREASE NIPPLE 00 1/8" BSPOT	02
10	01317670	PROTECTION CAP FOR GREASE NIPPLE	02

20	71802129 K	PACKSET FL 129/HP 129	01
21	72604371	STAGE 129-1360-HC	01
22		NOT APPLICABLE	
23	71807129 K	SLIDER FL 129/GF 129 (2 X 1/2)	02
24	71812129 K	LIFTRING FL 129/HP 129	01

30	71802110 K	PACKSET FL 110	01
31	72603371	STAGE 110-1360-HC	01
32		NOT APPLICABLE	
33	71807110 K	SLIDER FL 110/GF 110 (2 X 1/2)	02
34	71812110 K	LIFTRING FL 110	01

## Spare part list

Pos	Part no.	Description	Qty.
40	71802091 K	PACKSET FL 091	01
41	72602371	STAGE 091-1360-HC	01
42		NOT APPLICABLE	
43	71807091 K	SLIDER FL 091 (2 X 1/2)	02
44	71812091 K	LIFTRING FL 091	01

101	72401371	PISTON S 072-1365-HC	01
102	71875012	PIN ROUND HEAD GROOVED 8x15 mm	02
103	71870110 K	O-RING PISTON TOP 072	01
104	71807072 K	SLIDER FL 072 (2 X 1/2)	01
105	71807072 K	SLIDER FL 072 (2 X 1/2)	01
106	71870210	O-RING PISTON BOTTOM 072	01
107	71822072	BOTTOM PLATE PISTON 072	01
108	01745026	CIRCLIP 63 DIN 472 (67.2x2.0)	01
110	71836112	PISTON EYE SPH. 072 L=103	01
111	71875450	SPHERICAL BEARING D.50 MAINT. FREE	01
112	01770560	CIRCLIP GE 50 DO	01
123	71838950	DUST COVER FE 129 YELLOW	01

## Seal kit complete:

Part no.	Description
71901440 K	Seal kit complete: consists of all packsets with packset grease, O-rings and Pin (pos.102)