

HYVA CYLINDER



715 65 273B

Front end cylinder with double eye

type

FEE 149-4-04280-229A-K1482-HC

tipping weight

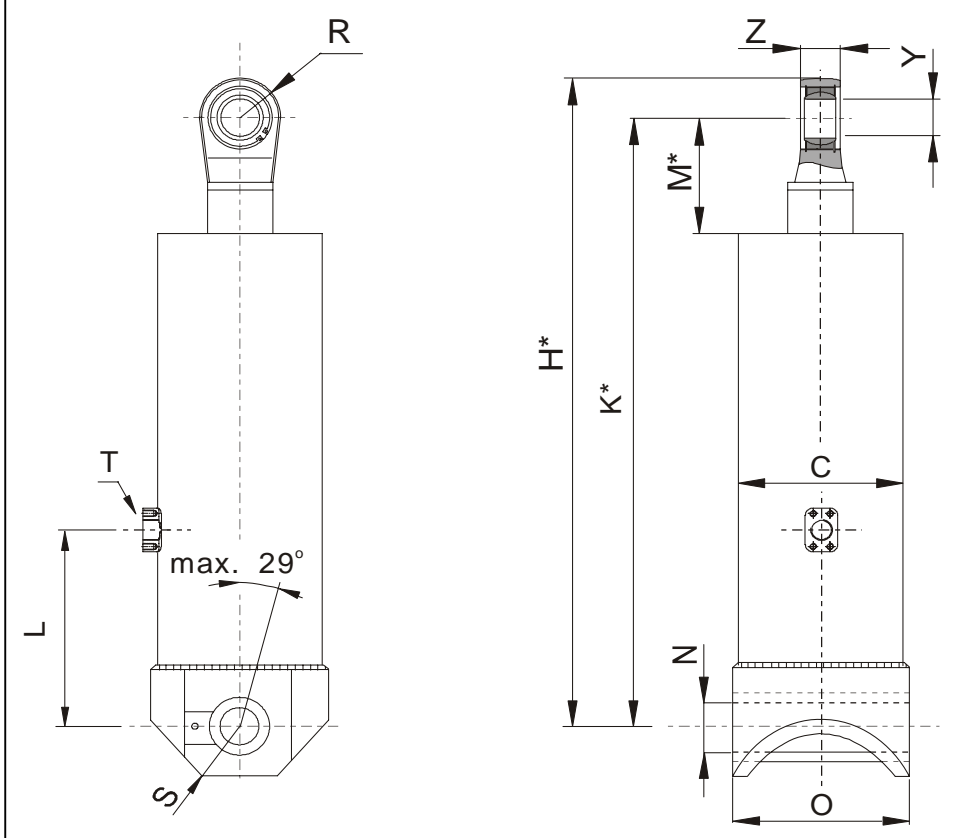
35-71 ton

page # 1 / 2

closed length (K)

1477-1512 mm

front & side view cylinder



	1	2	
A			mm
B			mm
C	169		mm
D			mm
E			mm
F			mm
G*			mm
H*	1535		mm
I			mm
J			mm
K*	1482		mm
L	280		mm
M*	128		mm
N	52.5		mm
O	240		mm
P			mm
Q			mm
R	53		mm
S	61		mm
T	3/4" NPT		
U			mm
V			mm
W			mm
X			mm
Y	50		mm
Z	42		mm

*incl.20[-5;30] pull out on piston

specifications

weight cylinder only	161 kg
total volume	55 L
working volume	50 L
maximum pressure	190 bar
maximum pump flow	137 L/min
maximum cylinder angle to front	30 °
maximum thrust first stage**	30 ton

technical notes

This cylinder is a lifting device only and may not be used as structural member or be subject to side load. Working pressure depends on application; never exceed maximum pressure. Cylinder painted with Akzo Air drying Enamel (RAL9005). Max duration of extension 2 hours (excluded HC). See mounting instruction CYL-0019. See oil specification sheet OIL-0002. See bracket specification sheet 015BRA01.

**when cyl. mounted at a large angle, thrust first stage may become too high: see Hyva Tipper Program

extension	1	2	3	4	5	6	7	8	9	
effective diameter [mm]	149	129	110	91						total
stroke [mm]	1055	1075	1075	1075						4280

tipping weight

tipping weight at maximum pressure of 190 bar and C is 158 mm

BL (body length); OH (rear overhang); X=Ycog (vert. pos. centre of gravity); Qo (pivot length); C (bracket length); At = stroke x 60 / Qo	BL	5700			5550			5400		
	OH	200	500	800	200	500	800	200	500	800
At	45	48	51	47	50	53	48	51	55	
Ycog										
600	35	40	46	36	41	48	37	42	51	
900	39	44	54	40	46	57	41	49	62	
1200	43	51	65	44	54	71	46	57		

Subject to change without notice.

DO-E 715 65 273B / 06-11-10 / RV AA

HYVA CYLINDER



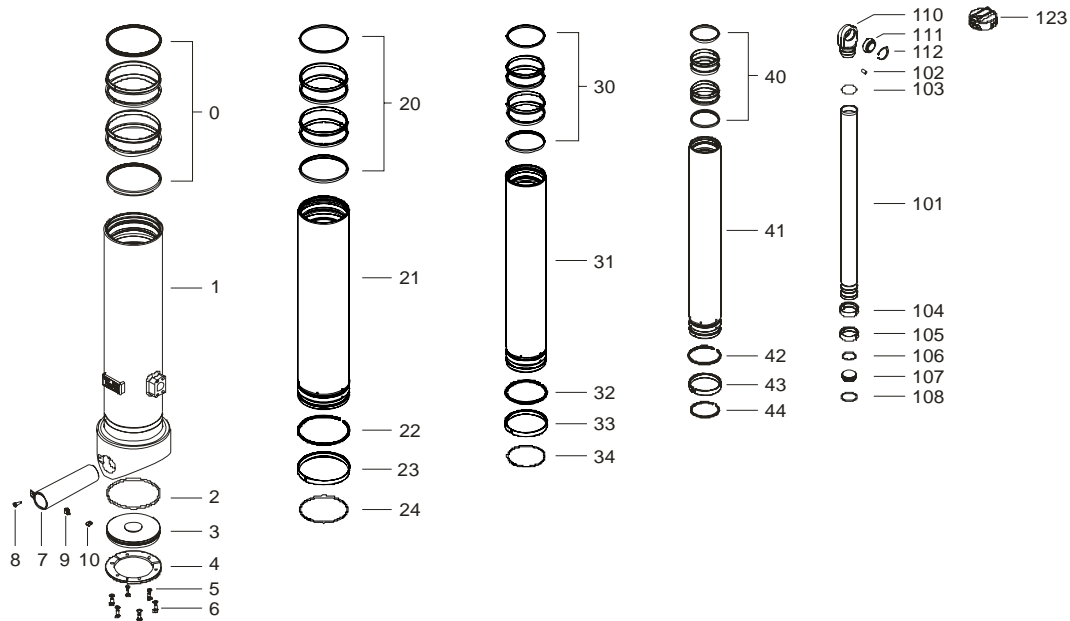
715 65 273B

Front end cylinder with double eye

type

FEE 149-4-04280-229A-K1482-HC

page # 2 / 2



Spare part list

Pos	Part no.	Description	Qty.
0	71802169 K	PACKSET 169	01
1	72506316	BASE E 169-1314-3/4NPT-280	01
2	71870035 K	SEAL BOTTOM PLATE 169	01
3	71821169	BOTTOM PLATE 169	01
4	71820169	LOCKING PLATE 169	03
5	01732559 K	SPRING WASHER M8 SET	01
6	01732055 K	BOLT M8 X 1.25 X 20 SET	01
7	01794368	LONG BOSS EYE B.169 (73-52.5) L=240	01
8	01746122	BOLT M8x35 DIN 7991	01
9	01317660	GREASE NIPPLE 90° 1/8" BSPOT	01
10	01317670	PROTECTION CAP FOR GREASE NIPPLE	01

20	71802149 K	PACKSET 149	01
21	72605301	STAGE 149-1275-HC	01
22	71811149 K	STOPRING OUTER 149	01
23	71807149 K	SLIDER 149	01
24	71812149 K	LIFTRING 149	01

30	71802129 K	PACKSET 129	01
31	72604301	STAGE 129-1275-HC	01
32		NOT APPLICABLE	
33	71807129 K	SLIDER 129 (2 X 1/2)	02
34	71812129 K	LIFTRING 129	01

Spare part list

Pos	Part no.	Description	Qty.
40	71802110 K	PACKSET 110	01
41	72603301	STAGE 110-1275-HC	01
42		NOT APPLICABLE	
43	71807110 K	SLIDER 110 (2 X 1/2)	02
44	71812110 K	LIFTRING 110	01

101	72402301	PISTON S 091-1280-HC	01
102	71875010	PIN ROUND HEAD GROOVED 6x15 mm	01
103	71870115 K	O-RING PISTON TOP 091	01
104	71807091 K	SLIDER 091 (2 X 1/2)	01
105	71807091 K	SLIDER 091 (2 X 1/2)	01
106	71870215	O-RING PISTON BOTTOM 091	01
107	71822091	BOTTOM PLATE PISTON 091	01
108	71814091	SNAPRING FOR PISTON 091	01
110	71836210	PISTON EYE SPH. 091 L=103	01
111	71875450	SPHERICAL BEARING D.50 MAINT. FREE	01
112	01770560	CIRCLIP 75 GE 50 DO DIN 472	01
123	71838960	DUST COVER FE 149-169 YELLOW COLOUR	01

Seal kit complete:

Part no.	Description
71901540 K	Seal kit complete: consists of all packsets with packset grease, O-rings and Pin (pos.102)