

HYVA CYLINDER



715 65 203B

Front end cylinder with double eye

type

FEE 149-4-03680-229A-K1385-HC

tipping weight

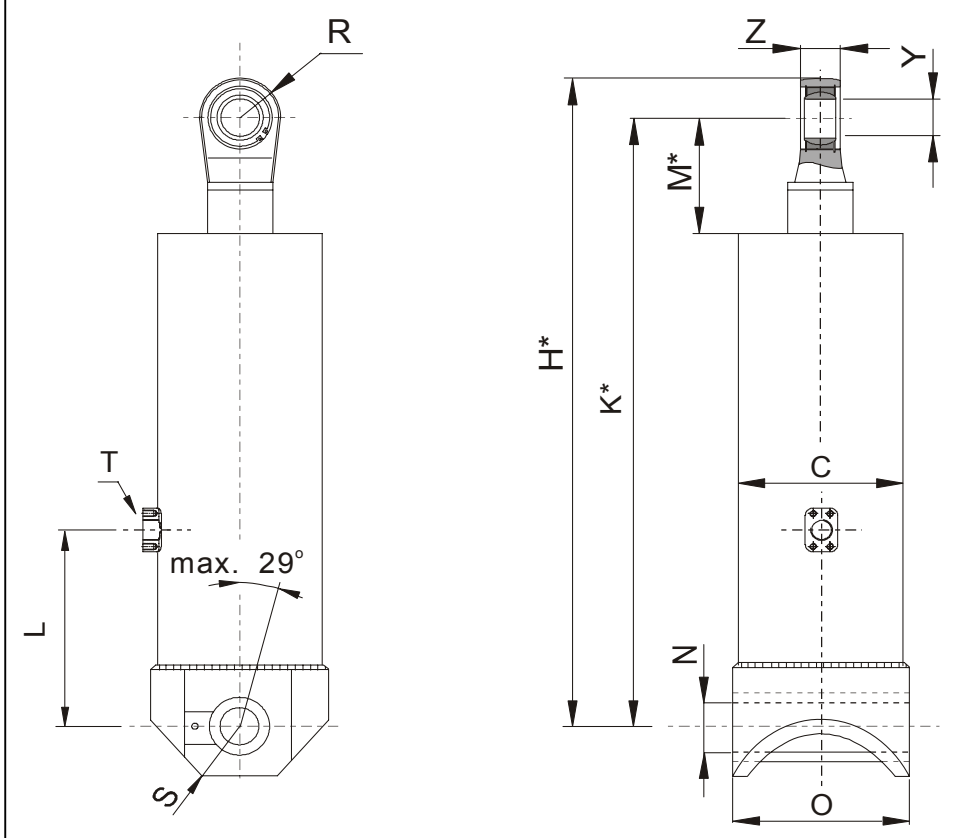
34-65 ton

page # 1 / 2

closed length (K)

1380-1415 mm

front & side view cylinder



	1	2	
A			mm
B			mm
C	169		mm
D			mm
E			mm
F			mm
G*			mm
H*	1438		mm
I			mm
J			mm
K*	1385		mm
L	330		mm
M*	181		mm
N	52.5		mm
O	240		mm
P			mm
Q			mm
R	53		mm
S	61		mm
T	1" NPT		
U			mm
V			mm
W			mm
X			mm
Y	50		mm
Z	42		mm

*incl.20[-5;30] pull out on piston

specifications

weight cylinder only	144 kg
total volume	47 L
working volume	43 L
maximum pressure	190 bar
maximum pump flow	137 L/min
maximum cylinder angle to front	30 °
maximum thrust first stage**	30 ton

technical notes

This cylinder is a lifting device only and may not be used as structural member or be subject to side load. Working pressure depends on application; never exceed maximum pressure. Cylinder painted with Akzo Air drying Enamel (RAL9005). Max duration of extension 2 hours (excluded HC). See mounting instruction CYL-0019. See oil specification sheet OIL-0002. See bracket specification sheet 015BRA01.

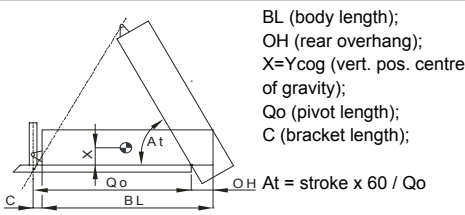
**when cyl. mounted at a large angle, thrust first stage may become too high: see Hyva Tipper Program

extension	1	2	3	4	5	6	7	8	9	
effective diameter [mm]	149	129	110	91						total
stroke [mm]	905	925	925	925						3680

tipping weight

tipping weight at maximum pressure of 190 bar and C is 158 mm

	BL	4900			4700			4500		
OH	200	400	600	200	400	600	200	400	600	
At	46	48	50	48	50	53	50	53	56	
Ycog										
400	34	37	41	35	39	43	36	40	46	
700	38	42	48	40	45	52	42	48	57	
1000	43	49	58	45	53	65	49	59		



Subject to change without notice.

DO-E 715 65 203B / 06-11-21 / RV AA

HYVA CYLINDER

715 65 203B

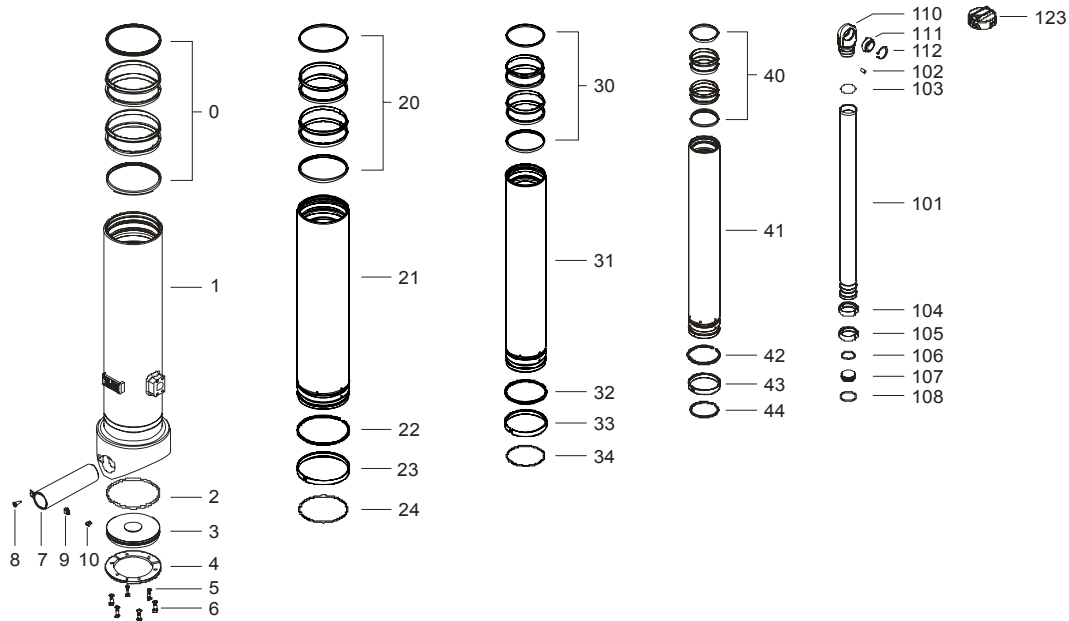


Front end cylinder with double eye

type

FEE 149-4-03680-229A-K1385-HC

page # 2 / 2



Spare part list

Pos	Part no.	Description	Qty.
0	71802169 K	PACKSET 169	01
1	72506218	BASE E 169-1164-4/4NPT-330	01
2	71870035 K	SEAL BOTTOM PLATE 169	01
3	71821169	BOTTOM PLATE 169	01
4	71820169	LOCKING PLATE 169	03
5	01732559 K	SPRING WASHER M8 SET	01
6	01732055 K	BOLT M8 X 1.25 X 20 SET	01
7	01794368	LONG BOSS EYE B.169 (73-52.5) L=240	01
8	01746122	BOLT M8x35 DIN 7991	01
9	01317660	GREASE NIPPLE 90° 1/8" BSPOT	01
10	01317670	PROTECTION CAP FOR GREASE NIPPLE	01

20	71802149 K	PACKSET 149	01
21	72605201	STAGE 149-1125-HC	01
22	71811149 K	STOPRING OUTER 149	01
23	71807149 K	SLIDER 149	01
24	71812149 K	LIFTRING 149	01

30	71802129 K	PACKSET 129	01
31	72604201	STAGE 129-1125-HC	01
32		NOT APPLICABLE	
33	71807129 K	SLIDER 129 (2 X 1/2)	02
34	71812129 K	LIFTRING 129	01

Spare part list

Pos	Part no.	Description	Qty.
40	71802110 K	PACKSET 110	01
41	72603201	STAGE 110-1125-HC	01
42		NOT APPLICABLE	
43	71807110 K	SLIDER 110 (2 X 1/2)	02
44	71812110 K	LIFTRING 110	01

101	72402261	PISTON E 091-1286-HC	01
102		NOT APPLICABLE	
103		NOT APPLICABLE	
104	71807091 K	SLIDER 091 (2 X 1/2)	01
105	71807091 K	SLIDER 091 (2 X 1/2)	01
106	71870215	O-RING PISTON BOTTOM 091	01
107	71822091	BOTTOM PLATE PISTON 091	01
108	71814091	SNAPRING FOR PISTON 091	01
110		NOT APPLICABLE	
111	71875450	SPHERICAL BEARING D.50 MAINT. FREE	01
112	01770560	CIRCLIP 75 GE 50 DO DIN 472	01
123		NOT APPLICABLE	

Seal kit complete:

Part no.	Description
71901540 K	Seal kit complete: consists of all packsets with packset grease, O-rings and Pin (pos.102)